



Pulsonix Vault Evaluation Guide

Copyright Notice

Copyright © WestDev Ltd. 2000-2023
Pulsonix is a Trademark of WestDev Ltd. All rights reserved. E&OE

Copyright in the whole and every part of this software and manual belongs to WestDev Ltd. and may not be used, sold, transferred, copied or reproduced in whole or in part in any manner or in any media to any person, without the prior written consent of WestDev Ltd. If you use this manual you do so at your own risk and on the understanding that neither WestDev Ltd. nor associated companies shall be liable for any loss or damage of any kind.

WestDev Ltd. does not warrant that the software package will function properly in every hardware software environment.

Although WestDev Ltd. has tested the software and reviewed the documentation, WestDev Ltd. makes no warranty or representation, either express or implied, with respect to this software or documentation, their quality, performance, merchantability, or fitness for a particular purpose. This software and documentation are licensed 'as is', and you the licensee, by making use thereof, are assuming the entire risk as to their quality and performance.

In no event will WestDev Ltd. be liable for direct, indirect, special, incidental, or consequential damage arising out of the use or inability to use the software or documentation, even if advised of the possibility of such damages.

WestDev Ltd. reserves the right to alter, modify, correct and upgrade our software programs and publications without notice and without incurring liability.

Microsoft, Windows, Windows NT and Intellimouse are either registered trademarks or trademarks of Microsoft Corporation.

All other trademarks are acknowledged to their respective owners.

Pulsonix is a trading division 10 WestDev Ltd.

Printed in the UK. Issue date: 30/03/22 iss 3

Pulsonix

20 Miller Court
Severn Drive
Tewkesbury
Glos,
GL20 8DN
United Kingdom

Phone +44 (0)1684 296 551

Email info@pulsonix.com

Web www.pulsonix.com

Support Phone +44 (0)1684 296 570

Email support@pulsonix.com

Contents

- CONTENTS..... 3
- CHAPTER 1. GETTING STARTED 4
 - Introduction to the Pulsonix Vault 4
 - Introduction to the Tutorial 4
 - Additional Help 4
- CHAPTER 2. INSTALLING THE PULSONIX VAULT 5
 - Installing the Pulsonix Vault 5
 - Signing In to the Vault..... 6
- CHAPTER 3. VAULT MANAGER OVERVIEW 7
 - Vault Manager Overview 7
 - Navigating the Vault Manager..... 7
- CHAPTER 4. USING THE PULSONIX VAULT 9
 - Creating a new design using Vault items..... 9
 - Inserting Components from the Vault 10
 - Checking a design into the Vault 15
 - Adding items to the Vault..... 16
 - Update Vault Design with Vault Part 19
 - Investigating items within the Vault 21
 - Creating a Search in the Vault 22
 - Seeing the Audit History within the Vault 23
 - Additional Information 24

Chapter 1. Getting Started

Introduction to the Pulsonix Vault

The Pulsonix Vault is a revision/version control system which allows you to manage Pulsonix data in a company defined methodology.

The Vault can be installed locally or on a company server and provides controlled user access to a database of Pulsonix data that can be checked in/out, deleted and modified with full audit history.

Introduction to the Tutorial

This tutorial is intended to familiarise you with the Pulsonix Vault features and its methodology by working through a step by step tutorial. Using a supplied Vault demo, the tutorial will show you how to setup, install and use the Pulsonix various elements within the Pulsonix Vault.

Additional Help

Help is available in a number of formats; Online help available by pressing **<F1>** at any time when using Pulsonix; by emailing us at support@pulsonix.com, or by calling us or your local distributor. You will also find the **Vault Users Guide** installed as a PDF file, this is instantly available from the Pulsonix **Help** menu and **<Online Manuals>**.

Chapter 2. Installing the Pulsonix Vault

Installing the Pulsonix Vault

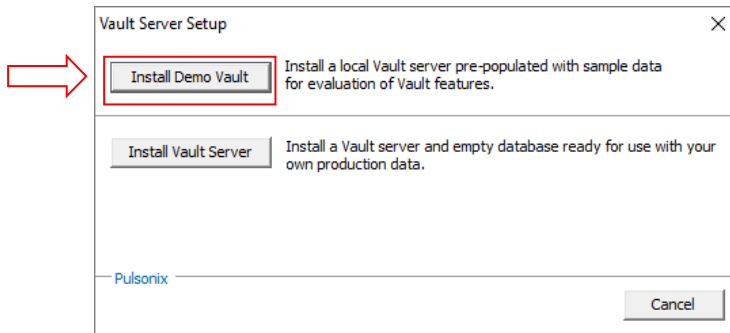
To install the Pulsonix Vault, you will need to run the **Vault Server Setup** application from your Pulsonix Vault Admin installation folder.

If you are running a newer version of Windows, you may find the icon on the right appear in your recently added applications.

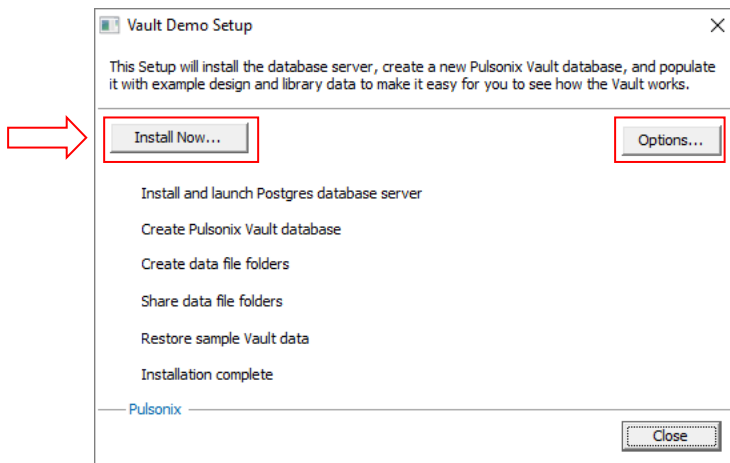


You should now see the **Vault Server Setup** dialog.

Click the **Install Demo Vault** button to install the pre-populated Vault which will be used in this tutorial.



Once you have pressed the **Install Demo Vault** button, you will then be presented with the **Vault Demo Setup** dialog as below:



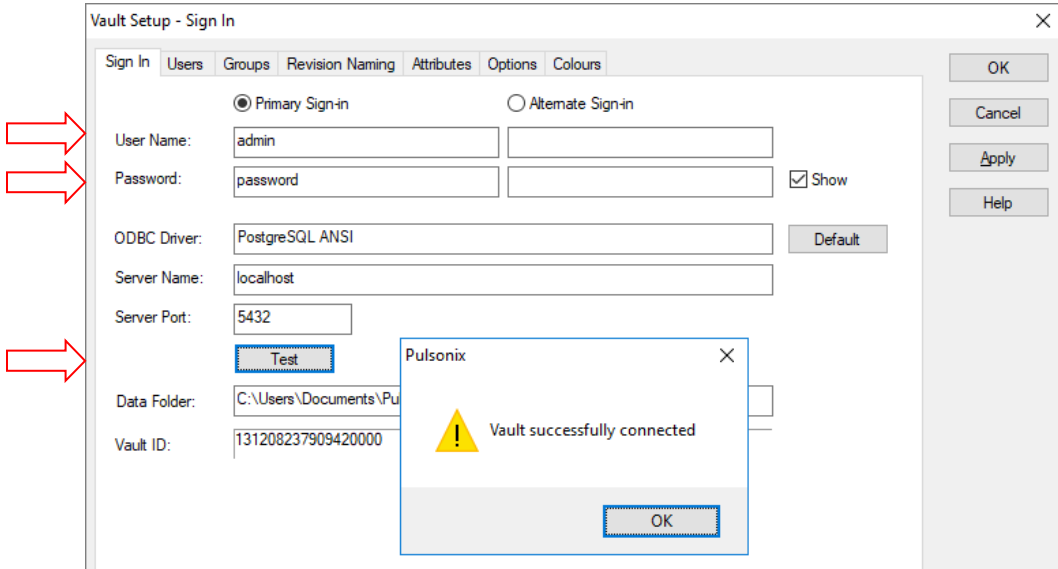
Click the **Install Now** button to complete the Vault Demo setup.

Note: If you already have a Postgres database running, press the **Options** button to set your existing database credentials.

Signing In to the Vault

The final stage of installing the Pulsonix Vault is to activate it from within Pulsonix.

In Pulsonix, go to the **Setup** menu, click **Vault**, you will now see the **Vault Setup – Sign In** dialog. From here, enter the **User Name: 'admin'** and **Password: 'password'** from the **Sign In** tab, click **Test** to verify the connection, click **OK** to close the dialog once the connection is verified and click **OK** again to close the **Vault Setup – Sign In** dialog.



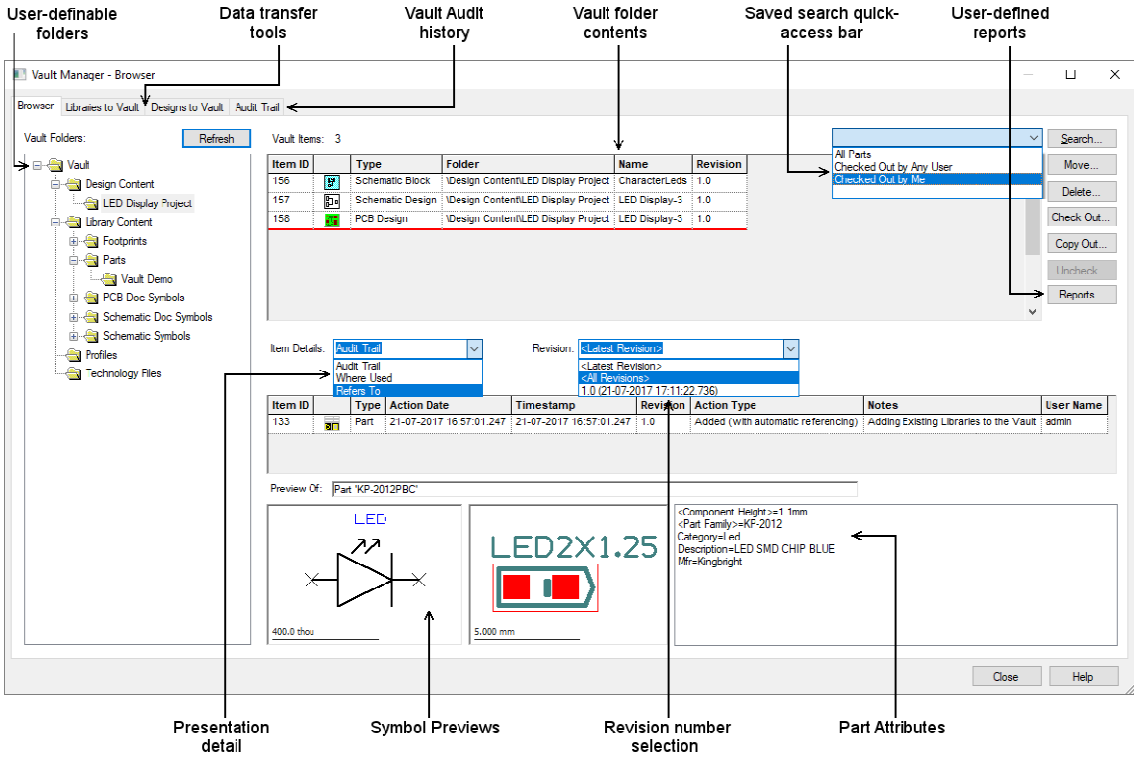
You are now ready to start using the Vault functionality.

Chapter 3. Vault Manager Overview

Vault Manager Overview

To open the **Vault Manager**, click the **File** menu and select **Vault Manager**. Within this dialog you can search and investigate all the items that are saved within your Pulsonix Vault.

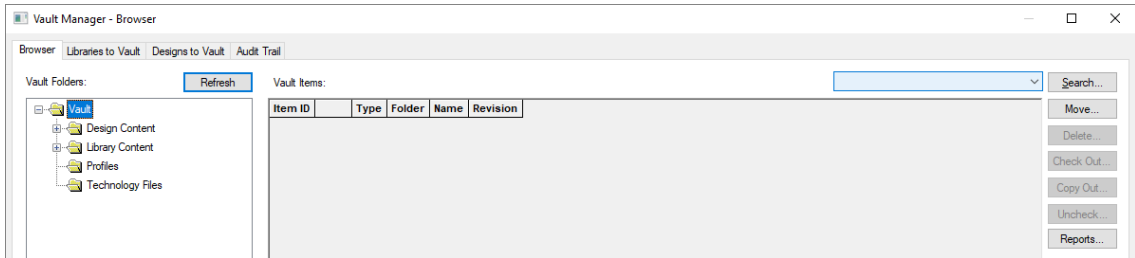
The picture below shows you the major facets that are within the Vault Manager.



Navigating the Vault Manager

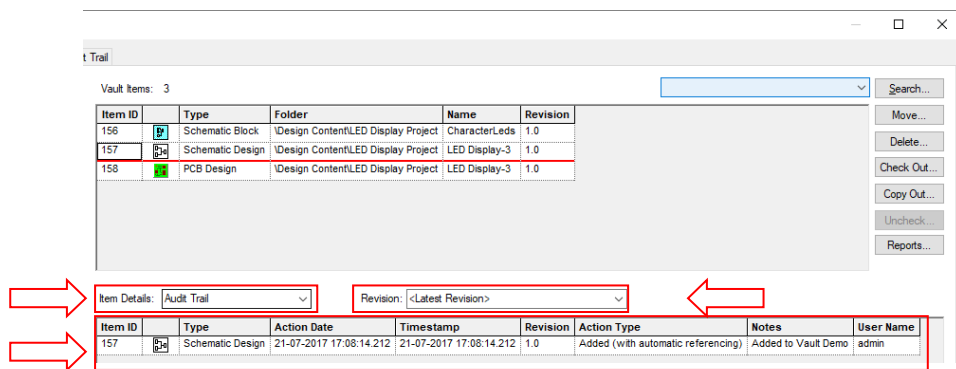
Upon opening the Vault Manager, you will be presented with a blank dialog, as shown below, to navigate the Vault manager you can expand the folders by selecting the '+' symbol.

8 Pulsonix Tutorial



Open the Design Content folder to show the content of the LED Display project. Within this folder you will see a Schematic Block, Schematic Design and a PCB Design.

Selecting the Schematic Design, you will now see specific details relating to the Schematic Design in the grid below.



► Changing the Item Details

Using the **Item Details dropdown arrow**, you can choose which information of the item you wish to inspect. You can choose from **Audit Trail** (an audit history of the selected item), **Where Used** (informs you where the Item is used, e.g. which Designs a selected Parts is used in) and **Refers To** (informs you which items are used in the selected item e.g. Which Parts are used in the selected design).

► Changing the displayed Revision

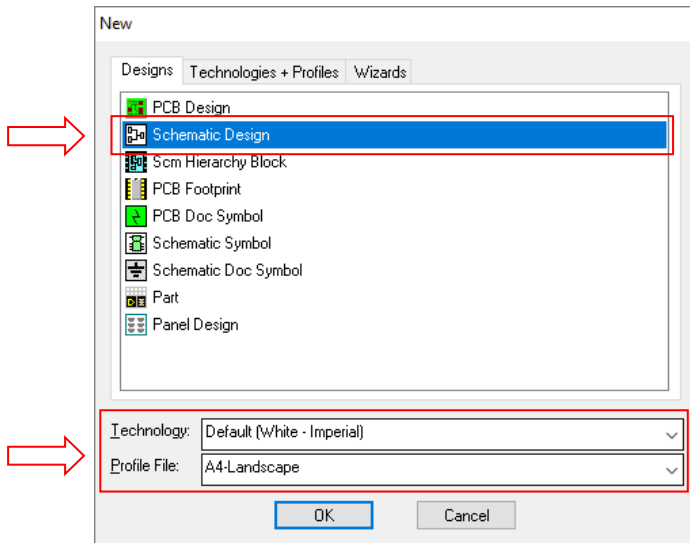
Using the Revision dropdown arrow, you can select which revision of the selected item will be displayed in the grid. You can choose from the **<Latest revision>** (Default setting), **<All Revisions>**, alternatively you can select a specific revision of an item.

Chapter 4. Using the Pulsonix Vault

Creating a new design using Vault items

► To start a new Schematic design

On the **File** menu, click **New** and **Schematic Design** from the **Design** tab.

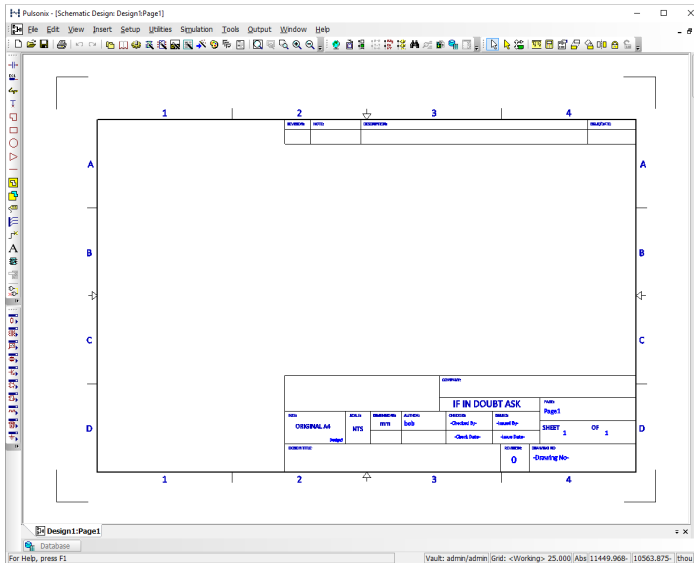


On the **Technology:** drop down list, click on the small 'down' arrow to reveal the list, select **Default (White - Imperial)**, by default this will be shown in the list with a blue background to indicate it has come from your Vault.

On the **Profile File:** drop down list, click on the small 'down' arrow, select the **A4-Landscape** profile file to add an A4 drawing blank, by default this will be shown in the list with a blue background to indicate it has come from your Vault. More detail about Technology files and Profile files is available in the online Help. For now, we will progress on to adding Components to the design.

Click the **OK** button to start a new Schematic design.

10 Pulsonix Tutorial



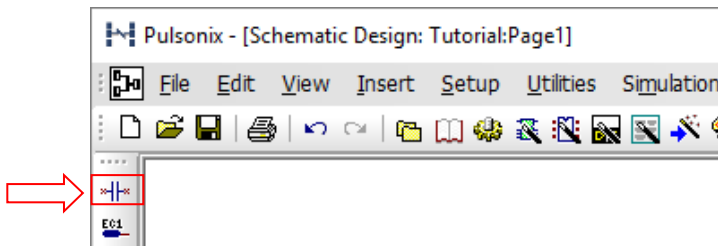
Your Pulsonix window will look like this to the left. To view the whole page, you may need to click <A> on the keyboard.

If you wish to start with a black background, either change it in **Colours**, shortcut <C> and the **Others** page or start the new design with the **Default** (Black – Imperial) Technology file.

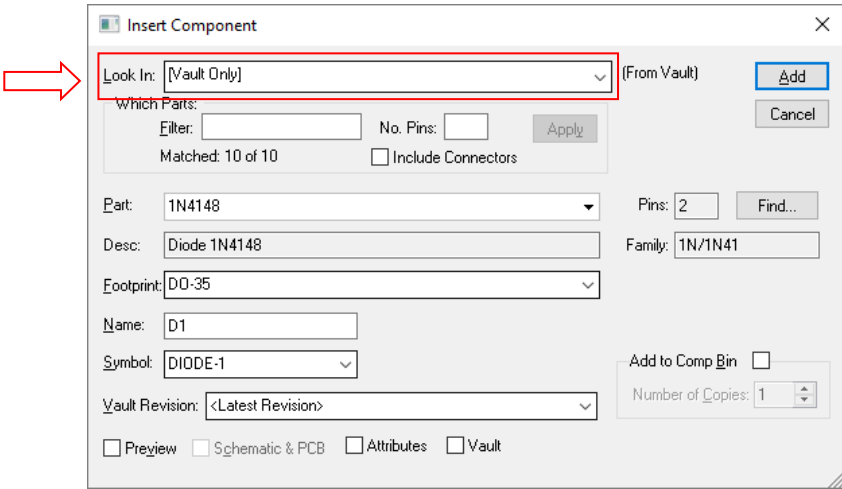
Inserting Components from the Vault

► To Insert a Component

Select the **Insert Component** button on the **SCM** toolbar (docked left side) shown circled below, or use the **Insert Component** option from the **Insert** menu. You can also use the shortcut key **Shift-C**

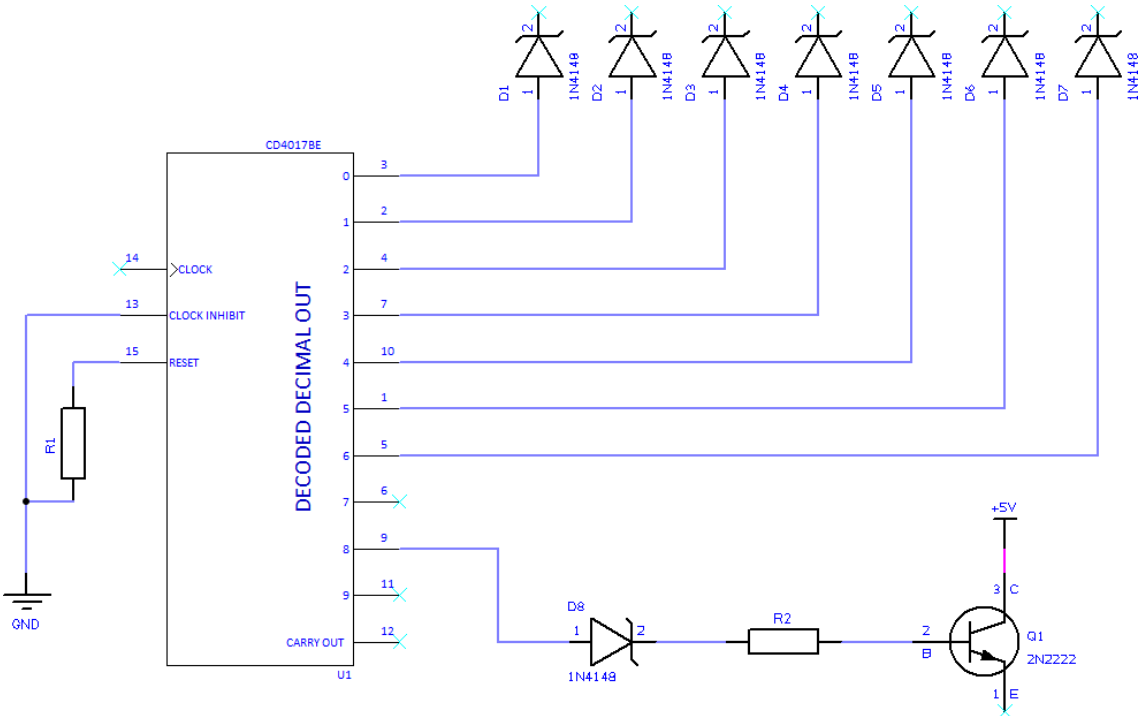


You are presented with the **Insert Component** dialog:



On the initial start-up, the **Look In:** will default to [All Libraries], change the this to be [Vault Only], this will then allow you to only place Parts that have come from your Vault.

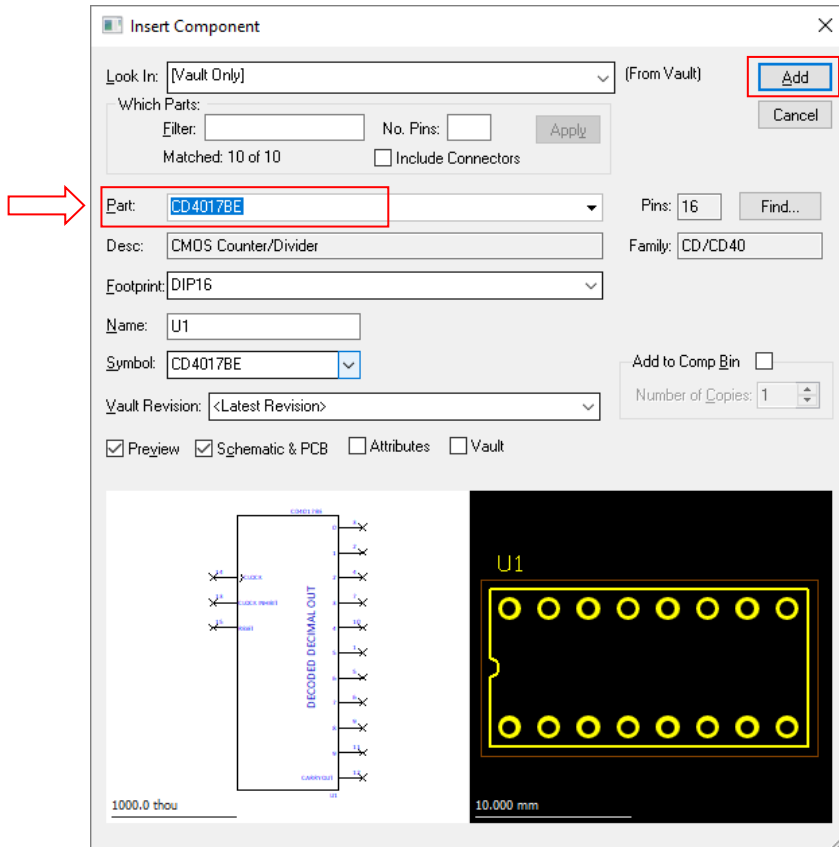
For the purpose of this tutorial, we will now make a portion of the LED Display example circuit which can be found in your Vault. As shown below:



The first Part to add is the CMOS Counter/Divider. One of the quickest ways to select the Part you want is to simply type the first letter(s) of its name.

In the Part box, Type C, you will now see the CMOS Counter (CD4017BE) is filtered in the list, now click the **Add** button to insert it into the design.

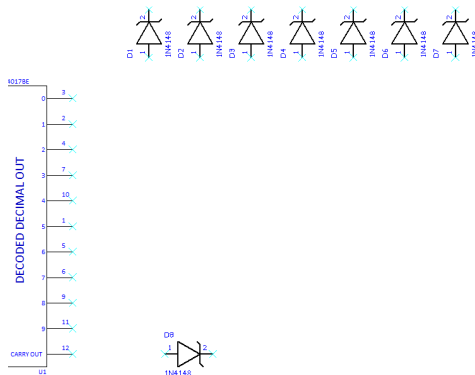
12 Pulsonix Tutorial



► Adding Diodes

We will now add the Diodes to our design. Click on the **Insert Component** button again.

Type **1N148** into the Part field. Click the **Add** button to add the Part to your design. We want to add 8 instances of this Part.



Use the 'R' key on your keyboard to rotate a component during placement.

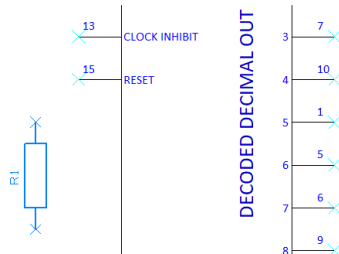
After you have inserted the symbol, clicking escape on your keyboard will take you back to the Insert Component Dialog.

Hint: Using the context menu during insert, you can select **Insert Multiple Items**, this will allow you to insert 7 instances in one process.

► Add First Resistor

We will now add the first resistor to our design. Click on the **Insert Component** button again.

From the drop-down arrow on the Part Field, select **R 0.25W 5% MCF 10K** and add it to your design as shown in the diagram below.



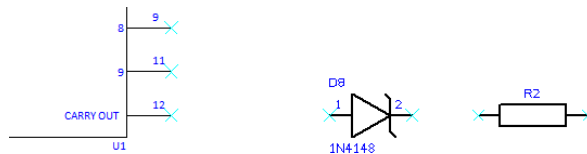
Use the 'R' key on your keyboard to rotate a component during placement.

After you have inserted the symbol, clicking escape on your keyboard will take you back to the Insert Component Dialog.

► Add Second Resistor

We now need to add the second resistor that has a different resistance value. Click on the **Insert Component** button again.

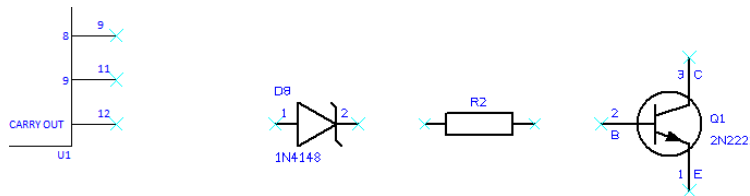
From the drop-down arrow on the Part Field, select **R 0.25W 5% MCF 330** and add it to your design as shown in the diagram below.



► Add Transistor

The final Part we need to add the design is the Transistor. Click on the **Insert Component** button again.

Type **2N222** into the Part field. Click the **Add** button to add the Part to your design. Your design should now look something similar to the image below.



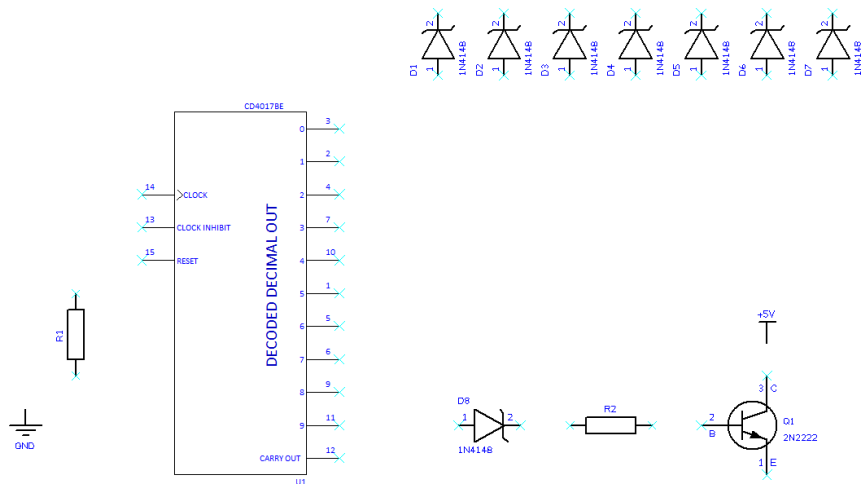
► Adding Signal References

We now need to add Signal References to our Design. To do this, click **Signal Reference**, from the Insert Menu.

Ensure the **Look In:** is set to **[Vault Only]**. Select the **+5V Symbol** from the Symbol drop-down list and using the **Add** button, insert the symbol above the Transistor in your design. Upon adding the symbol into the design, a dialog will appear allowing you to define the Net on the Signal, leave it as +5V and click the **Use for all net type** button.

Once you have inserted the +5V Signal Reference, press the escape key on your keyboard, you will now see the **Insert Signal Reference** dialog, from here, select the **GND** symbol from the Symbol list and add it to your design below R1.

Your design should now look like the image below:

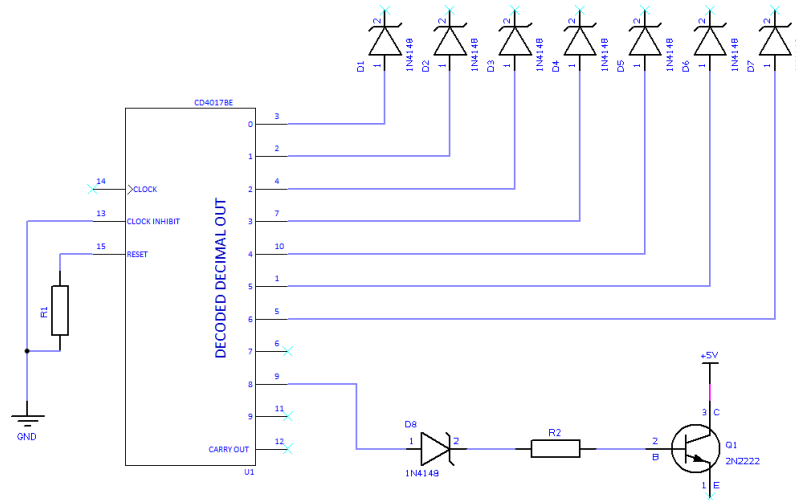


► Adding connections to your design

To finish this example circuit, we need to add connections to this design.

To insert a connection, you can double click on a Symbol's pin which will invoke the insert connection option. Alternatively, you can use the **Insert Connection** mode, available from the **Insert** menu.

Route the Schematic so it looks similar to the example below:



Our example circuit is now finished, you can choose to click the **Save** option from the **File** menu if you would like to keep a local copy of the file prior to checking it into the Vault. If you do not choose to save the design, the Vault will automatically create a save version as you check it into the Vault for the first time.

Checking a design into the Vault

With the example design we have just created open, click the **File** menu and select **Check into Vault**.

You will now be presented with the **Check Into Vault** dialog.

In **Name:** type `'Tutorial Design'`. Next you need to define where the design will be saved to, set the **Vault Folder** to be `\\Design Content\\Tutorial Design`. Finally, add a **Check In Note** for the design.

When checked, the **Close item after Check In** option will close the design automatically for you.

Press the **OK** button to check the design into your Vault.

Adding items to the Vault

The next section of this tutorial will look at how to add new items to the Vault for the first time.

We will look to add a Surface Mount resistor to the Vault as we do not currently have one in the demo.

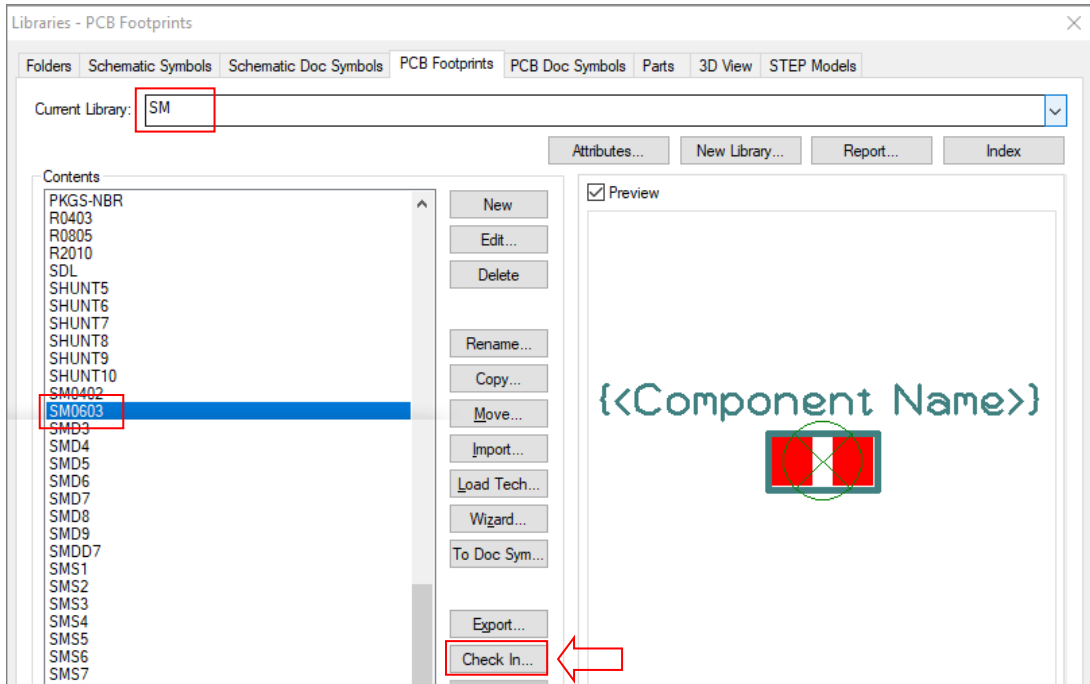
As there is already a resistor Schematic Symbol in the Vault, we will only need to add a Footprint and Part to the Vault.

► Add SM0605 Footprint to Vault

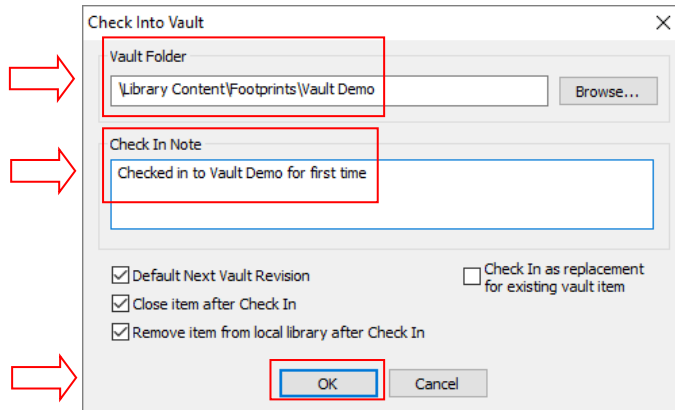
From within Pulsonix, go to **Setup, Libraries** and click the **PCB Footprints** tab.

Clicking the drop-down arrow, open the **SM** library.

From within the **Contents**, select the footprint **SM0603** and click the **Check In...** button.



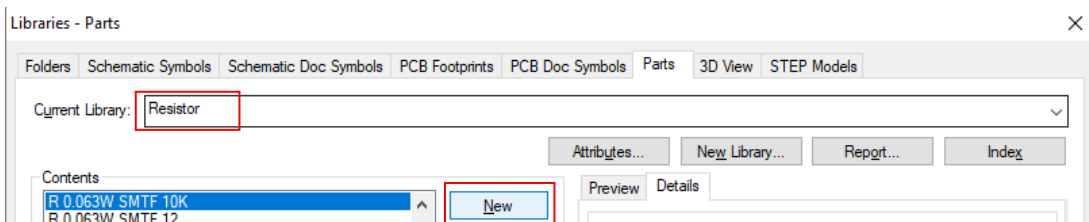
From within the **Check Into Vault** dialog, select the chosen **Vault Folder** and enter a **Check In Note** for the Footprint. Press the **OK** button to check the Footprint into the Vault.



Now the Footprint is in the Vault, we can look to create a Part, referencing the Schematic Symbol and PCB footprint which is form the Vault.

► Create New Part to include Vault Items

From within the **Library Manager**, click the **Parts Tab**, select the **Resistor** Library from the drop-down arrow and click the **New** button.



Within the **New Part** Dialog, type the name for the new Part, this will be **R 0.25W 10K**. Now you type a **Description** for the Part, its **Name Stem** and **Pin Count**.

Next, in the **PCB View** section, we need to assign a Footprint to the Part. Using the drop-down arrow, search for the **SM0603** footprint we added to the Vault.

Finally, in the **Schematics View**, search for the Symbol **R** which is in the Vault.

New Part

Part Name: R 0.25W 10K

Part Type: Normal Part PCB Only Schematics Only Connector Associated Part

Provide Part Details Now (Quick Part Creation)

Description: Thick Film Surface Mount Resistor

Part Family:

Name Stem: R Pin Count: 2

PCB View

Footprint: SM0603 (Vault) Pads: 2

Schematics View

Single Symbol Multiple Gates Gate Count:

Symbol Pin Count:

Symbol: R {Vault} Pins: 2

Total Schematics Pins: 2 Ungated Pins: 0

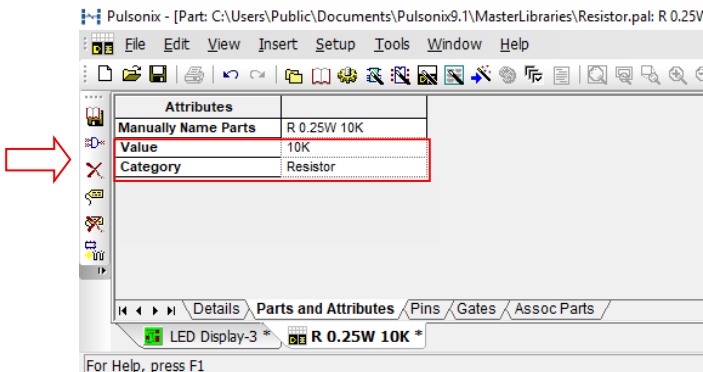
Power Pin Pin: Net: VCC

Ground Pin Pin: Net: GND

► Adding Attributes to the Part

From within the Part Editor, we can now add Attributes to the Part, these will then be searchable from within the Vault should we need to search for them.

Type 10K in the Value field and Resistor in the Category field.

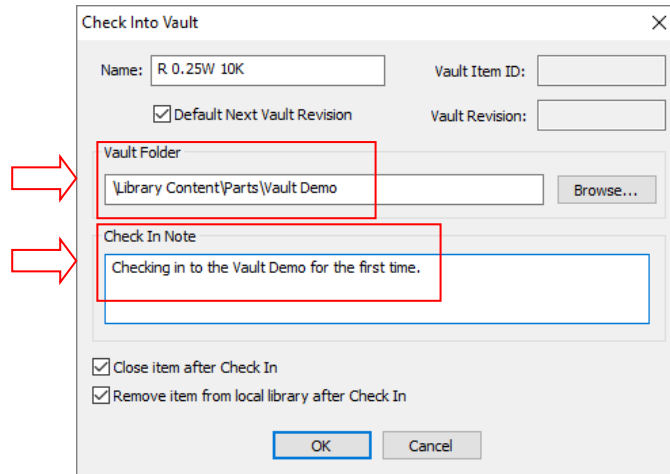


If you wish to add more attributes, go to the **Insert** menu and click **Attributes**.

► Check Part into Vault

Now the Part is complete, we now need to check it into the Vault. From the **File** menu, click **Check Into Vault**.

Select the chosen **Vault Folder** and enter a **Check In Note** for the Part.

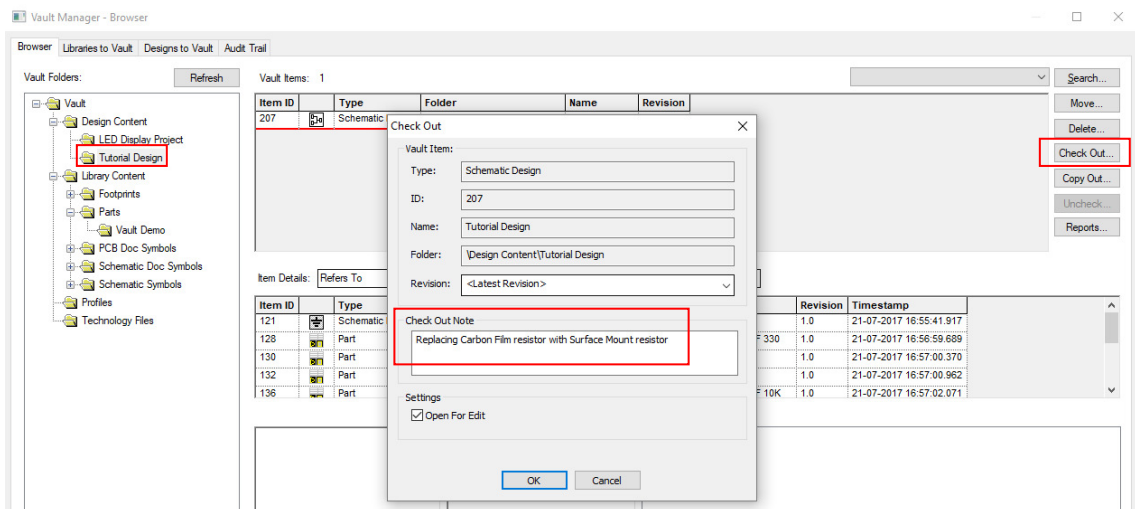


Update Vault Design with Vault Part

► Update Tutorial Design with R 0.25W 10K Resistor

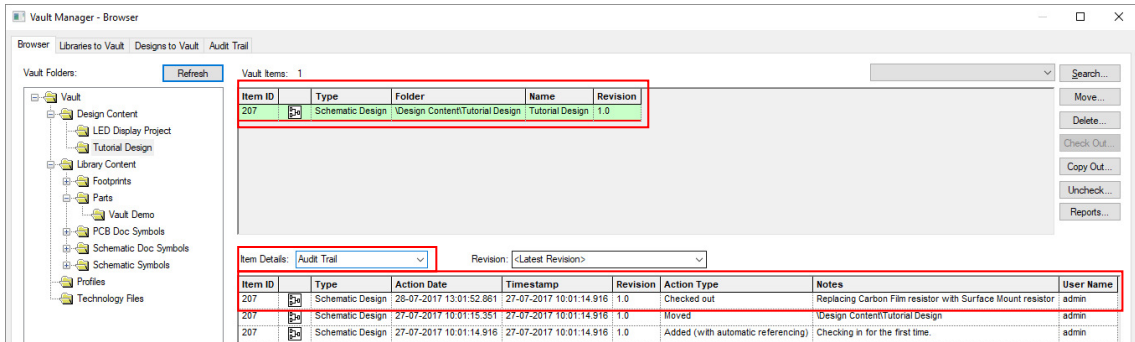
We will now check the Tutorial Design out of the Vault and replace the now deemed 'obsolete' 10K Carbon Film resistor with the more modern Surface Mount version we just created.

From within the **Vault Manager**, open the Tutorial Design folder, select the Tutorial Schematic Design and click the **Check Out...** button. Add a note in the **Check Out Note** section and press **OK**.



Once checked out, you will notice the Tutorial Design has changed its background colour in the **Vault Manager**. This indicates the item has been checked out by a user. Changing the **Item Details**: to display the **Audit Trail** allows you to see the action that has occurred and by whom.

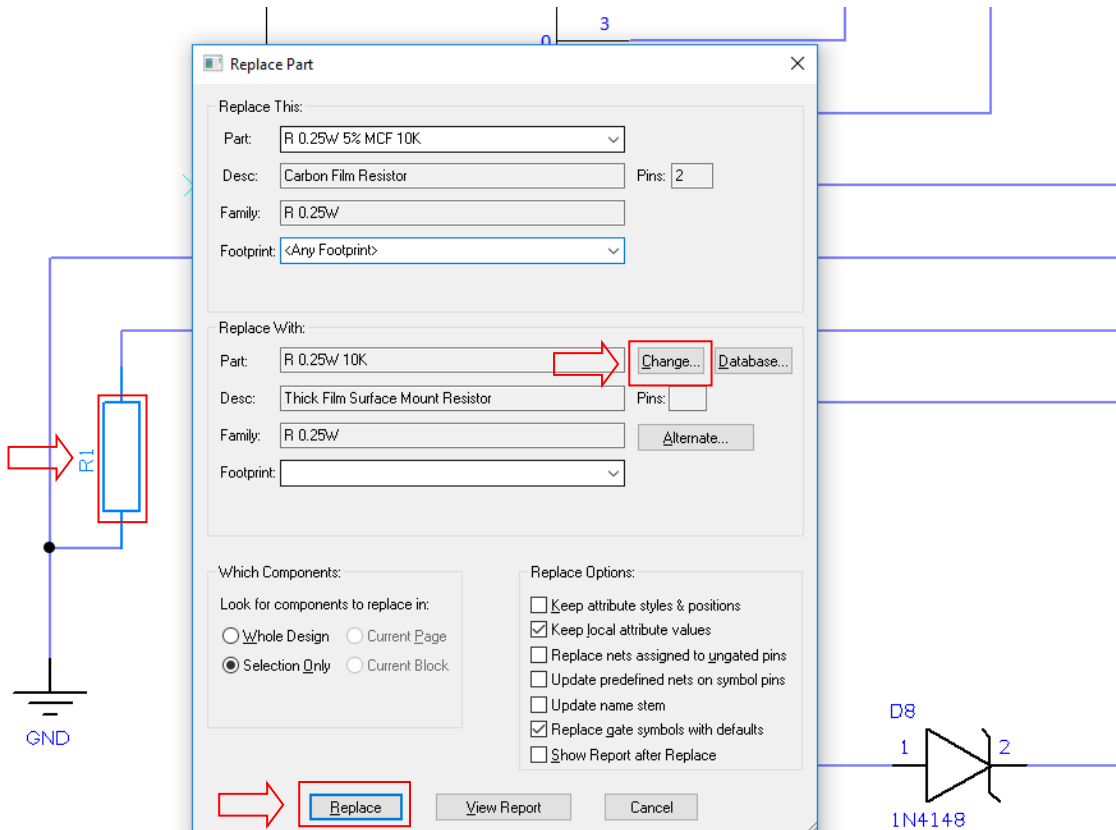
20 Pulsonix Tutorial



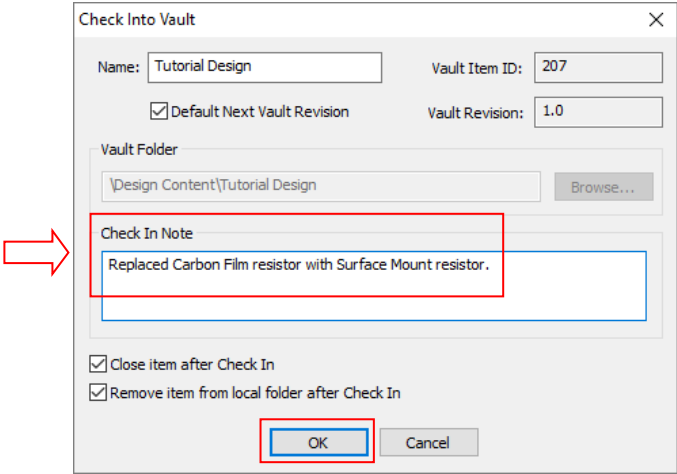
► Replace Resistor in the Tutorial Design

Select the component R1 in your design, right click and select **Replace Part** from the Context Menu.

From within the Change Part dialog, click the **change** button and select the R 0.25W 10K Resistor we added to the Vault earlier in this tutorial. Click the **Replace** button to update the design with the new Part.



We can now check the design back into the Vault. From the **File** menu, click **Check Into Vault**, add a **Check In Note** and press **OK** to finish.



Investigating items within the Vault

Now that we have more than one revision of the Tutorial Design in the Vault, we can start to see an audit history of what actions have happened and by whom.

If we change the **Item Details:** to **Refers To**, and the Revision: to **<Latest Revision>**, we will see the design now contains the new resistor we have added to replace the 'obsolete' Carbon Film resistor.

Item Details: Refers To Revision: <Latest Revision>

Item ID	Type	Folder	Name	Revision	Timestamp
147	Schematic Technology	\Technology Files	Default (White - Imperial)	1.0	21-07-2017 16:57:45.921
192	Schematic Doc Symbol	\Library Content\Schematic Doc Symbols\Vault Demo	A4-Border-Landscape	1.0	26-07-2017 09:47:30.294
200	Schematic Profile	\Profiles	A4-Landscape	1.0	26-07-2017 09:55:32.113
211	Part	\Library Content\Parts\Vault Demo	R 0.25W 10K	1.0	28-07-2017 12:52:24.095

Preview Of: Part 'R 0.25W 10K'

<Component Height>=
<Hyperlink>=
Category=Resistor
Description=Thick Film Surface Mount Resistor
MRP No=
Value=10K

We now need to if the 'obsolete' Carbon Film resistor is used in any other designs and will then be able to update those designs with the new Surface Mount version accordingly.

► Locate Carbon Film Resistor

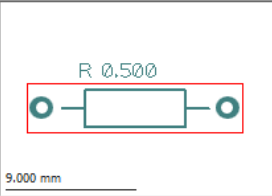
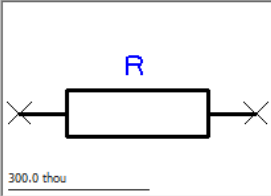
To locate the Carbon Film Resistor we can change the Design **Revision:** to be **1.0**, as we know this design revision uses the old resistor. Select the Resistor in the Item Details section, right click and select **Show 'Where Used'** from the **Context Menu**.

22 Pulsonix Tutorial

Item Details: Refers To Revision: 1.0 (27-07-2017 10:01:14.916)

Item ID	Type	Folder	Name	Revision	Timestamp
132	Part	\Library Content\Parts\Vault Demo	CD4017BE	1.0	21-07-2017 16:57:00.962
136	Part	\Library Content\Parts\Vault Demo	R 0.25W 5% MCF 10K	1.0	21-07-2017 16:57:02.071
138	Part	\Library Content\Parts\Vault Demo			21-07-2017 16:57:02.868
147	Schematic Technology	\Technology Files			21-07-2017 16:57:45.921
192	Schematic Doc Symbol	\Library Content\Schematic Doc Symbols\Vault Demo	A4-Border-Landscape	1.0	26-07-2017 09:47:30.294

Preview Of: Part 'R 0.25W 5% MCF 10K'



<Part Family>=R 0.25W
Category=Resistor/Carbon Film
Description=Carbon Film Resistor
R=10K

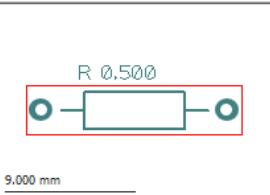
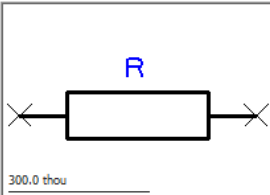
The Vault Manager will now 'jump' to the **Item Details** table for the Resistor Part and list all the designs it is used in.

We can see that the Carbon Film resistor is also used in the LED Display Schematic and PCB Designs. These would need to be checked out and updated before the next iteration is produced.

Item Details: Where Used Revision: <Latest Revision>

Item ID	Type	Folder	Name	Revision	Timestamp
157	Schematic Design	\Design Content\LED Display Project	LED Display 3	1.0	21-07-2017 17:08:14.212
158	PCB Design	\Design Content\LED Display Project			21-07-2017 17:11:22.736
207	Schematic Design	\Design Content\Tutorial Design	Tutorial Design	1.0	27-07-2017 10:01:14.916

Preview Of: Part 'R 0.25W 5% MCF 10K'



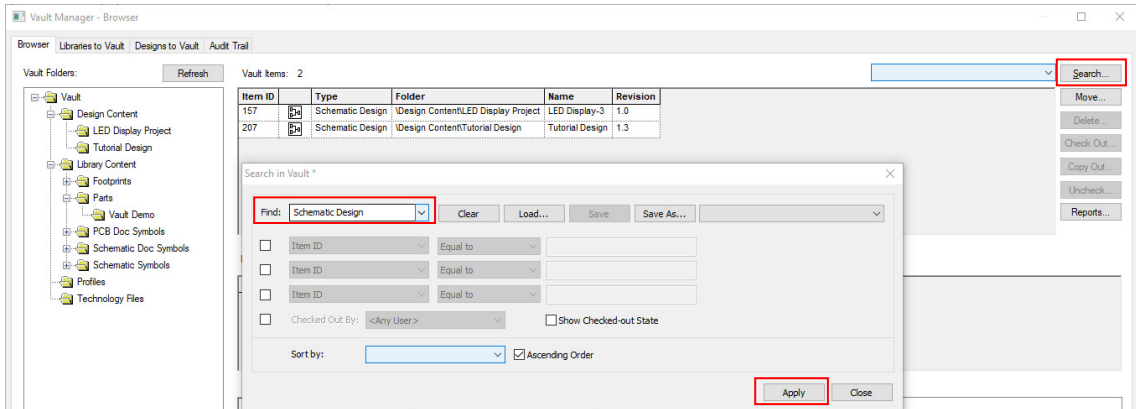
<Part Family>=R 0.25W
Category=Resistor/Carbon Film
Description=Carbon Film Resistor
R=10K

Creating a Search in the Vault

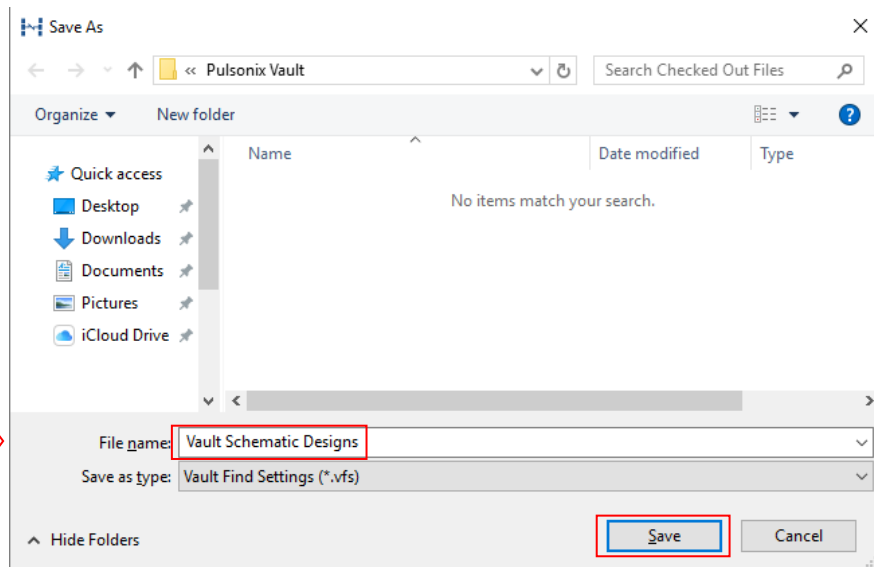
We will now look to create a Search from within the Pulsonix Vault, these can be saved for easy access in future.

From within the **Vault Manager**, Click the **Search...** button.

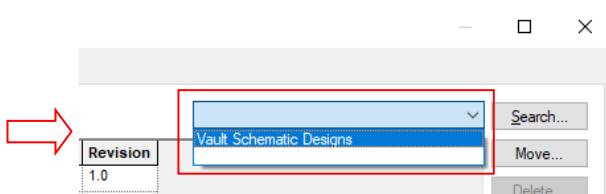
You will now be within the **Search in Vault** dialog, change the **Find:** to be **Schematic Design** and press the **Apply** button.



Now click the **Save As** button, and type **Vault Schematic Designs** for the name of your search and press **Save**.



Going back to the Vault Manager, you will now see the Search is available from the drop-down arrow for ease of access and use in the future.



Note: You could create quick searches to show All items currently checked out of the Vault, or All items checked of the Vault by user x.

Seeing the Audit History within the Vault

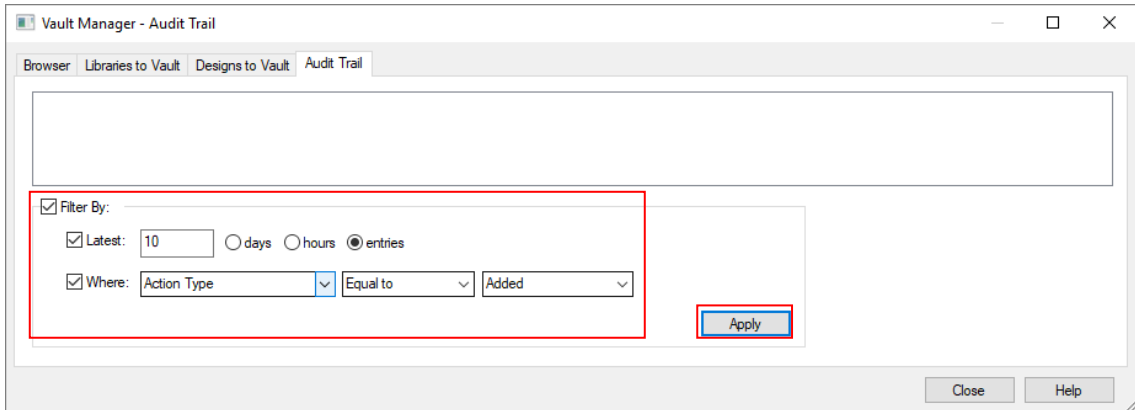
When you wish to see recent activity within the Vault, you can use the Audit Trail tab to see what actions have occurred, when they occurred and by whom.

► Create Audit Trail Query

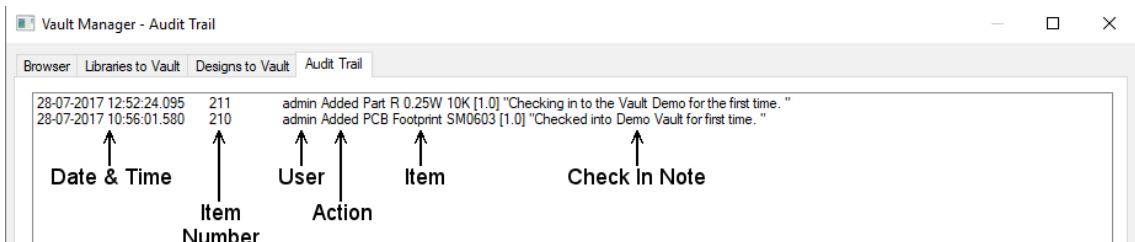
Enable the **Filter By:** section, tick the **Latest:** box and enter **10** in the value section. Now select the **entries** radial button.

Tick the **Where:** box and select **Action Type**, Equal to and Added in the drop-down boxes.

Now press the **Apply** button to see the results of your query.



From this search, we can see two items have been added to the Vault, the time and date they were added, by whom, what the item was and the note that accompanied the check in.



This completes our brief run-through of the Pulsonix Vault.

Additional Information

There are more aspects to Pulsonix Vault which are not covered in this document. Further information can be obtained in the Online Help using the <F1> key at any time, or from the Pulsonix Users Guide supplied as a PDF file under the **Help** menu and **Online Manuals** or on our web site.

While evaluating Pulsonix or once you've purchased it, technical support is provided in the form of telephone support from our office or from your local sales office, or by email.

Head office support +44 (0)1684 296 570

Head office email support support@pulsonix.com

Web site www.pulsonix.com